



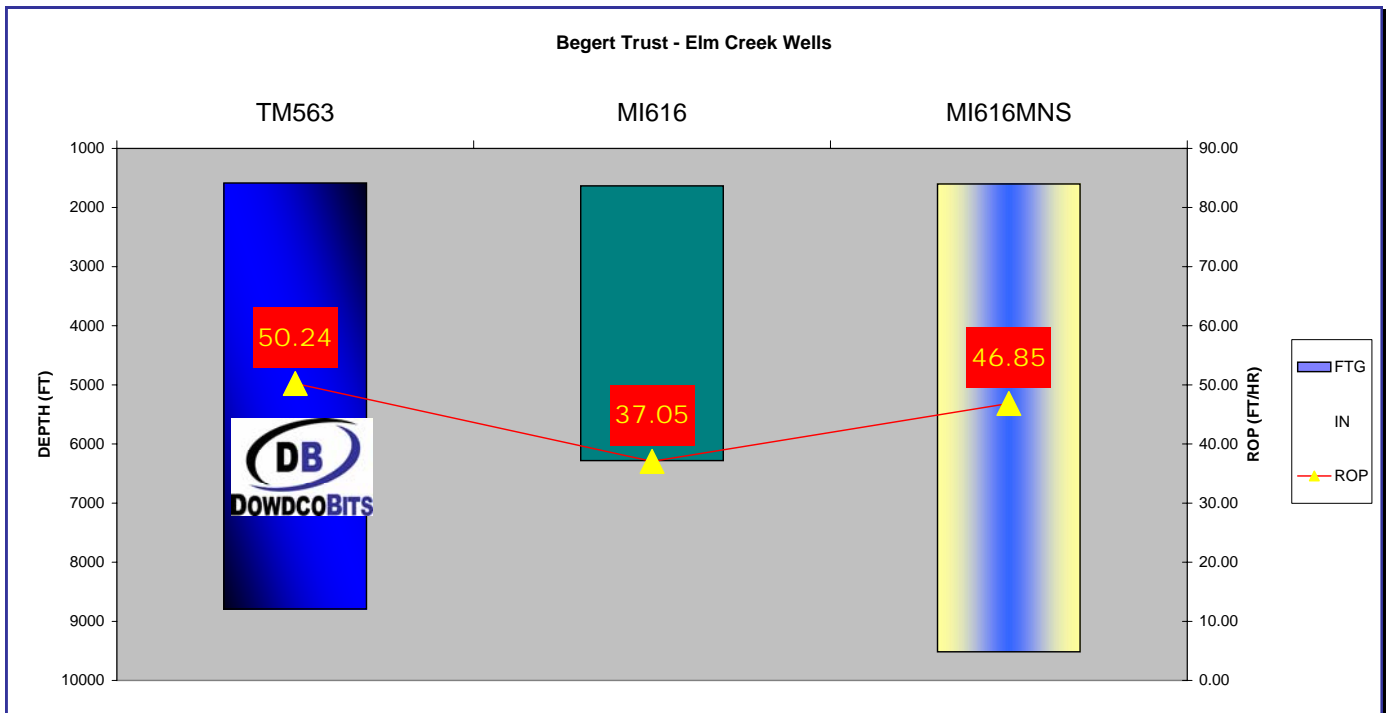
# BIT PERFORMANCE

7.875 TM563 D3045

Laredo Petroleum  
Bronco 62, Begert Trust 6-1  
Hemphill, Co., TX

I	O	D	L	B	G	OD	RP
6	2	CT	N	X	0	NO	PR

MFR	SIZE	TYPE	IN	OUT	FTG	HRS	ROP
DWD	7 7/8	TM563	1,585	8,794	7,209	143.5	50.24
STC	7.875	MI616	1,633	6,283	4,650	125.5	37.05
STC	7.875	MI616MNS	1,600	9,518	7,918	169	46.85









# DOWDCO BIT RECORD



Complete

OPERATOR <b>Laredo Petroleum</b>		CONTRACTOR <b>Bronco</b>				RIG NUMBER <b>62</b>		LEASE NAME <b>Begert Trust</b>				LEASE N <b>32-1</b>		BIT RECORD DATA BASE NUMBER															
OPERATOR REPRESENTATIVE Steve Taylor				CONTRACTOR REP. Jim McNutt/Gary Tillman				BIT RECORD CLASSIFICATION				DESCRIPTION				OBJECTIVE				CONTRACT TYPE				DOWDCO SALES REPRESENTATIVE Dan Brown					
COUNTY <b>Hemphill</b>		STATE <b>TX</b>		FIELD		SURVEY <b>H&amp;TC</b>		ABSTRACT		COORDINATES		SECTION <b>32</b>		TOWNSHIP <b>Blk 41</b>		RANGE		SPUD DATE <b>1/26/08</b>											
DRILL PIPE 1		DRILL		LENGTH		O.D.		I.D.		PUMP NO. 1		MAKE		MODEL		STROKE		LINER		MUD TYPE 1		RIG TYPE		INT. SET <b>N/A</b>					
DRILL PIPE 2		DRILL		LENGTH		O.D.		I.D.		PUMP NO. 2		MAKE		MODEL		STROKE		LINER		MUD TYPE 2		WATER SOURCE		WATER DEPTH		BLOCK		STARTING DEPTH <b>60</b>	
BIT NO.	SIZE	MFG.	TYPE	SERIAL NO.	JETS TFA	DEPTH OUT	FEET	HRS.	ROP	ACC. HRS.	WOB 1000 lbs	RPM	VERT. DEV.	PUMP PRESS.	GPM or SPM #1	GPM or SPM #2	MUD WT.	MUD VIS.	I	O	IADC DULL GRADE					FORMATION DATE/COMMENTS			
1	12.25	JZ	HA116C	D16736	3/16	1600	1540	21.5	71.6	21.5	20	120		1200	290	290	8.33	26											01/28/08
2	7.875	Smith	MI616MNS	JX8744	3/16	2907	1307	16	81.7	37.5	10	80	0.75	950	401		10	26										01/29/08	
						4103	2503	37.5	66.7	75	10	90		1100	400		9	26									01/30/08		
						9518	7918	169	46.9	244	12-18	70-85		1250	366		8.7	38									02/05/08, TOH for bit		
3	7.875	Hughes	HC5067T	7115937	3/16	11060	1542	28	55	272	12	80		1400	401		9	42									2/7/08		
						13398	3880	76	51	348	16	70		1600	401		9	43									TD 2/10/08		

Comments: